



Advanced Protective Workwear System

Korgan & Molten Extreme

kms trading
OUR SOLUTION FOR ENERGY

MARINA
TEXTIL

KORGAN

KORGAN is a personal protective equipment set consisting of a jacket and trousers made from **Marlan Plus 350 fabric**. It is specifically designed for professionals in **foundries, steel and iron plants, cement works and power stations**, where workers are exposed to extreme heat and molten metal splashes.

Thanks to its advanced fabric structure, KORGAN will not ignite even under direct flame contact, offers **excellent heat resistance**, and repels molten metal splashes to prevent skin contact. In addition, its **antistatic properties** provide extra protection against electrostatic discharge.



Thanks to its **lightweight design**, KORGAN ensures comfort and freedom of movement even during extended wear. Its **high durability** allows for repeated washing and reliable performance under tough conditions.

Fabric weight: 350 g/m²

Standards & Performance:

- **EN ISO 11612:2015** – A1 A2 B1 C1 D3 E3 F1
Protection against heat, flames, molten metal
- **EN ISO 11611:2015** – A1 A2 – Class 2
Protection during welding and related processes
- **EN 17353:2020** – Type B2
Visibility in medium-risk and low-light



Advantages of Korgan

Maximum Protection (D3 & E3 Class):

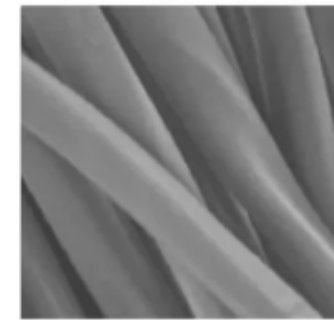
Highest safety level – withstands 350g molten aluminum and 200g molten iron. Metal splashes run off easily without sticking.

High Wearing Comfort:

Breathable **Tencel® fibers** reduce perspiration and keep the wearer dry. Lightweight and ergonomic for full freedom of movement.

Skin-Friendly:

Perfect for sensitive skin – no irritation or allergies. Noticeably more comfortable than synthetic fibers, even during long-term use.



TENCEL®

Cotton



350
10,3



157
61,8



Twill 3/1



Class 1



8 Cal/cm²
78,2% HAF



Class 2

KORGAN in comparison: More protection. More comfort.

Characteristic	Korgan (Marlan Plus 350)	Competitors
Risk of metal adhesion	Not available (Thanks to the natural fibres, molten metal does not stick to it)	High (metal adheres due to aramid fibres)
Air permeability	High (Comfortable, sweat-reducing structure)	Low (Distracting structure for the user)
User convenience	High (comfortable even during prolonged use)	Low (uncomfortable during prolonged use)

KORGAN – setting the highest standards in workplace safety

Long Service Life & Cost Efficiency

- Durable Marlan Plus 350 for maximum longevity
- Resistant to wear and washing – no frequent replacement needed
- Significant cost savings through long-term use

KORGAN Conclusion

- Ensures the highest workplace safety standards
- Boosts motivation, performance & productivity
- Unique fabric technology – innovative & unmatched in effectiveness

Choose Korgan.

Ensure the **safety of your employees and increase the **efficiency** of your business.**

EU type certificate



CERTIFICATE No. 25/08470/00/0161/B

PPE TYPE SET
REF: JACKET & TROUSER KORGAN SMY2013




AITEK, Notified Body No. 0161 for the application of Regulation (EU) 2016/425 of the European Parliament and of the Council of 9th March 2016, in which the essential health and safety requirements that Personal Protective Equipment (PPE) must comply with.

CERTIFIES The Company:

THERMAX TEKNIK TEKSTIL İzoLAsYoN sAN Tic A.S.
Karayolları Mahallesi 644 Sokak No: 2311/A
TR-34000 GAZİOSMANPAŞA
Turkey

As a manufacturer





CERTIFICATE No. 25/08470/00/0161/B

Has obtained EU TYPE EXAMINATION in compliance with what is set out in Annex V (module B) in Regulation (EU) 2016/425 and in agreement with the applicable test procedures and technical specifications

Designed for indicate the user's presence at night in hazardous situations with low visibility medium risk situations and designed for the protection of the user's body with the exception of head, hands and feet, according to the following standards:

- EN ISO 13688:2013+EN ISO 13688:2013/A1:2021 Protective clothing - General Requirements.
- EN 17353:2020 enhanced visibility equipment for medium risk situations at night (Type B2).
- EN ISO 11611:2015 (A1+A2) against burn risks from welding and similar processes (Class 2).
- EN ISO 11612:2015 against thermal risks of limited flame spread (A1+A2), convective heat (B1), radiant heat (C1), molten aluminium splash (D3), molten iron splash (E3) and contact heat (F1).



Tests carried out after 5 washing cycles 60°C
Having achieved the performance requirements specified in conformity assessment report No. 2025EP1017UE and the PPE's Technical Documentation.

Description of the PPE:
Jacket and trouser set made in navy blue woven fabric with 2,5 cm retroreflective tapes, stitched. The PPE is available from size S to 2XL.

The materials that form the PPE, are described in the conformity assessment report nº 2025EP1017UE.

It shall be the manufacturer's responsibility to provide specific information of this certificate and the tested levels of protection.

The CAT. III PPE shall only be used in conjunction with one of the conformity assessment procedures according to module C2 or module D described in article 19 letter c) of the Regulation (EU) 2016/425.



Date of first certification
08/05/2025
Digitally Signed by: SILVIA DEVEZA VALENCIA
NºFP: 21657673E
Validity of this certificate:
- Starting Date: 08/05/2025
- Date of expiry: 08/05/2030
* Date (dd/mm/yyyy)

Silvia Devesa Valencia
Laboratory Subdirector and Innovation

MOLTEN HERO EXTREME

The **Molten Hero Extreme** is a high-performance protective coat made from a combination of **Marlan Plus 350 outer fabric, a 150 g/m² meta-aramid inner layer, and additional insulation materials**. This multilayer system is specifically designed for work environments with **extreme heat and radiant thermal exposure**.

It provides **maximum protection** against molten metal splashes, direct flame, and radiant heat. Ideal for use in **metal smelting plants, foundries, glass production facilities, and other high-temperature industrial environments**.



Despite its high level of protection, the ergonomic design ensures **freedom of movement, comfort, and efficiency** during extended wear.

Fabric weight: 615 g/m²

Standards & Performance:

- **EN ISO 11612** – A1 A2 B1 C2 D3 E3 F1 (protection against heat, flames, radiant heat, and molten metal)
- **EN ISO 11611** – A1 A2 – Class 2 (protection during welding and related processes)
- **EN 17353** – Type B2 (visibility in low-light or night work)
- **EN ISO 105-X12 / E04 / C06** (color fastness to washing, sweat, and abrasion)



EU type certificate





CERTIFICATE No. 23/5783/00/0161

PPE TYPE COAT
REF: MOLTEN EXTREME COAT




AITEX, Notified Body No. 0161 for the application of Regulation (EU) 2016/425 of the European Parliament and of the Council of 9th March 2016, in which the essential health and safety requirements that Personal Protective Equipment (PPE) must comply with.

CERTIFIES The Company:

THERMAX TEKNIK TEKSTIL İzoLAsYoN sAN Tic A.Ş.
Karayolları Mahallesi 644 Sokak No: 2311/A
TR-34000 GAZİOSMANPAŞA

As a manufacturer





CERTIFICATE No. 23/5783/00/0161

Has obtained EU TYPE EXAMINATION in compliance with what is set out in Annex V (module B) in Regulation (EU) 2016/425 and in agreement with the applicable test procedures and technical specifications

Designed for indicate the user's presence at night in hazardous situations with low visibility medium risk situations and designed for the protection of the torso and upper limbs of the user with the exception of head and hands., according to the following standard/s:

- EN ISO 13688:2013+EN ISO 13688:2013/A1:2021 Protective clothing - General Requirements.
- EN 17353:2020 Enhanced visibility equipment for medium risk situations at night (Type B2).
- EN ISO 11612:2015 against thermal risks of limited flame spread (A1+A2), convective heat (B1), radiant heat (C2), molten aluminium splash (D3), molten iron splash (E3) and contact heat (F1).
- EN ISO 11611:2015 (A1+A2) against burn risks from welding and similar processes (Class 2).

Tests performed after 5 cycles at 60°C
Having achieved the performance requirements specified in conformity assessment report No. 2023EP0305UE and the PPE's Technical Documentation.


Description of the PPE:

Jacket made in navy blue woven fabric with an interior yellow non-woven fabric and lining. It has 2,5 cm retroreflective tapes, stitched. Size from S to XL

The materials that form the PPE, are described in the conformity assessment report nº 2023EP0305UE.

It shall be the manufacturer's responsibility to provide specific information of this certificate and the tested levels of protection.

The CAT. III PPE shall only be used in conjunction with one of the conformity assessment procedures according to module C2 or module D described in article 19 letter c) of the Regulation (EU) 2016/425.



Date: 23/02/2023 16:21:55
Digitally Signed by: SILVIA DEVESEA VALENCIA -
CF:21457673E

Silvia Devesa Valencia
Laboratory Subdirector and Innovation

Exclusive Sales Partner Germany:

KMS Trading GmbH
Centroallee 273-277
46047 Oberhausen

Hikmet Güneş

Mobile: +49 177 444 2828
h.guenes@kms-trading.com

Selvet Sünger

Mobile: + 49 171 128 6230
s.suenger@kms-trading.com

Marcel Michler

Mobile: +49 173 543 9596
m.michler@kms-trading.com

